



Zero Emissions Woollahra

Supporting Community Action

Survey Results and Report

1. Background

In September 2019, Woollahra Council joined many other local councils to acknowledge that we are in a state of climate emergency. In response, action is required to support a rapid transition to zero carbon emissions and we are embedding climate action into Council plans, policies and works programs.

In 2021 we asked the community how we can support our local residents, schools and businesses to reduce their emissions. We also wanted to hear views on setting a proactive community emissions target for our area. We added to this by discussing sustainability initiatives with several local schools and businesses.

What do we know about current emissions across Woollahra?

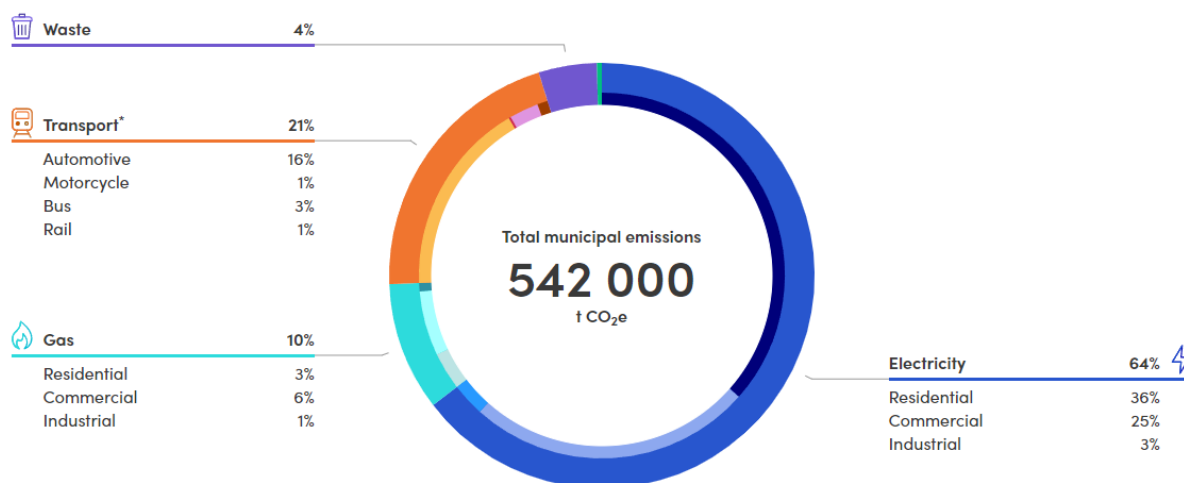
Local emissions per person are relatively high compared to other parts of Sydney.

Report time period

2019 January – December ▾

Woollahra

2019 municipal emissions snapshot



Source: <https://snapshotclimate.com.au/>

Focus areas to reduce local emissions

Based on this emissions data to help reduce community emissions in our area there are two key areas of action to make a significant difference.

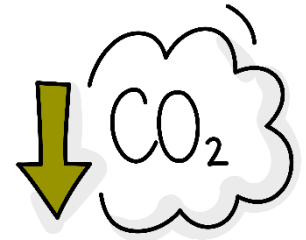
1. Electricity – support transition to renewable energy through rooftop solar and switching to 100% GreenPower
2. Cars – support the transition to electric vehicles.

2. Key Survey Results

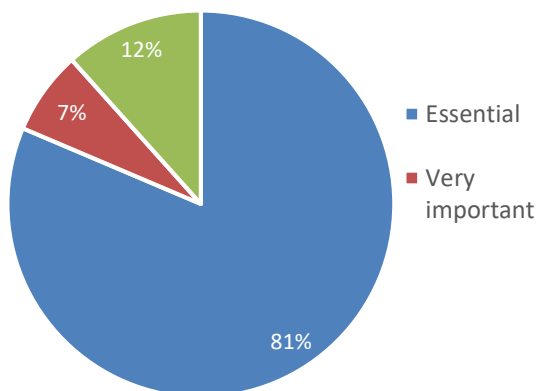
Number of people responded = 43

How important is it for Council to support community emissions reduction?

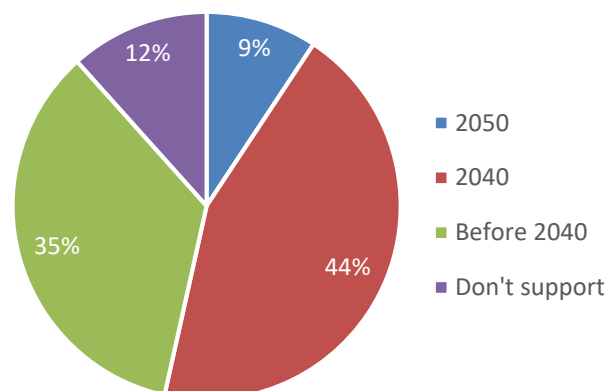
- 88% think it is important for Council to support community action.
- 79% support a zero emissions target of 2040 or earlier.
- Respondents who supported setting a community emissions target commented that it is important for the environment to act now, our area should be setting the example for others and targets are important to motivate action.
- Respondents who didn't support a target commented that Council should focus on the basics such as roads and community infrastructure and they found no evidence that mankind affects the global climate.



How important do you think it is for Council to support the community to reduce their carbon emissions?



What year should we aim to reach net zero community emissions in Woollahra area?



"We must address climate change before it is too late. We owe this to the next generation." Survey response

"Goal setting acts as a motivation to establish a plan and start steps towards achieving the target." Survey response

What are your priority actions to reduce your emissions in the next 5 years?

The top 2 survey responses for each area of action area are noted below.

Energy

- Install solar and batteries
- Switch to GreenPower

Waste

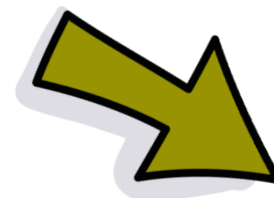
- Recycle regularly
- Compost regularly (at home and with Kitchen to Compost)

Transport

- Walk regularly
- Purchase an electric vehicle

Purchasing and Investment

- Avoid single use plastics
- Buy less stuff



3. Council response to support community action

Setting a target to reduce local emissions

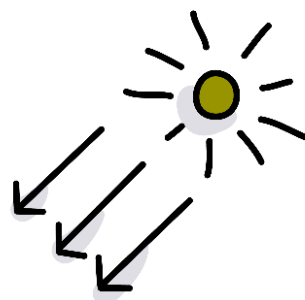
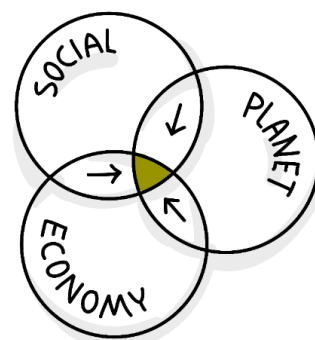
In response to the survey results and community feedback our Councillors decided to set an aspirational target for the Woollahra community to reach net zero emissions by 2030.

Supporting local actions

We will provide a range of workshops and undertake projects that support our community to reduce their carbon emissions.

For the community

- Provide workshops about how to install rooftop solar panels and batteries.
- Provide workshops about energy efficient appliances and how to switch to GreenPower.
- Provide workshops about electric vehicles.
- Install public charging stations for electric vehicles.
- Provide information to residents about where our recycling goes and how to recycle well.
- Promote Kitchen to Compost program and e-waste recycling to encourage participation by all residents.
- Improve local streets for walking and riding safely.
- Highlight local walking routes and riding paths.
- Provide advice about plants to provide cooling for homes and wildlife habitat.



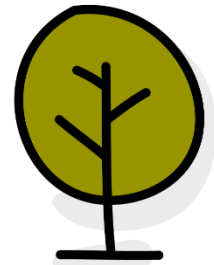
For businesses and non-profit groups

- Showcase how local businesses and non-profit groups are reducing emissions.
- Provide information about how businesses can reduce energy, water and waste.
- Link businesses with government rebates that support the purchase of energy efficient equipment.
- Link businesses with government programs to reduce waste.
- Assist clubs and non-profit organisations to install rooftop solar through the 'Solar My Club' program.
- Support local cafes to reduce emissions.



For schools

- Support a school trial of the ClimateClever program to monitor carbon emissions and reduce energy use.
- Support a school uniform recycling program trial.
- Support schools to plant more local trees and shrubs.
- Assist schools to install rooftop solar through the 'Solar My School' program.



Other important actions

- Woollahra Council's operations have been certified carbon neutral from June 2018.
- Council resolved on 5 July 2021 to request the Commonwealth government commit to net zero emissions by 2050 before the COP26 climate conference.
- We joined hundreds of cities around the world in the Cities #RaceToZero, pledging to at least halve carbon emissions by 2030 www.citiesracetozero.org.

